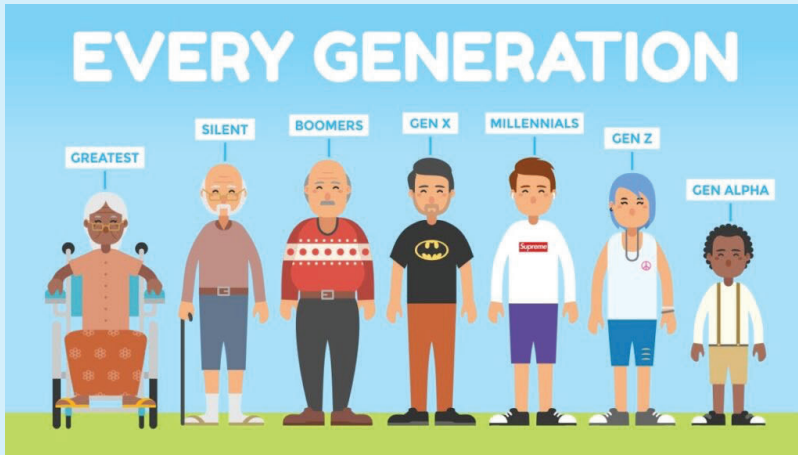


# BriteLight™

A Light Switch  
The Magic is Inside™



**nuro**  
Redefining  
Today's Smarts



## Just want it to work

- A traditional switch for everyone.
- Operates right out of box.
- No dependency on any modern technology!
- Any visitor/guest can operate it.



## Mobile App and Voice

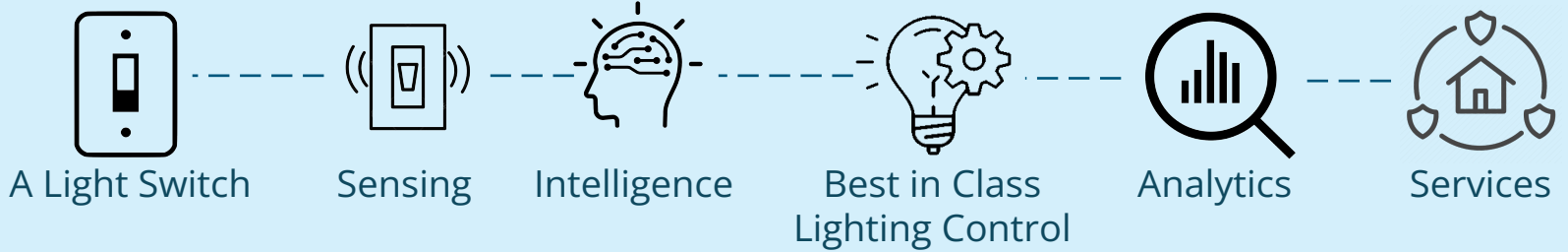
- Connect to home Wi-Fi.
- Start with App and Voice Control.
- Use BriteHome wizard that was designed to accommodate all users. The wizard will get your BriteLights quickly configured so you can enjoy the touchless lighting features



## Tech | Geek | Expert

- Use App to customize any aspect of the touchless lighting control.
- Enroll in DIY services for:
  - Securing a room, or combination of rooms up to and including the entire house. Comes with light strobing and intrusion deterrence.
  - Aging in Place – Ability to identify abnormal patterns and send alerts without any wearables.
- No camera or microphone means no eavesdropping or invasion of privacy.
- Whatever technology comfort level you are in, BriteHome starts within that level. As you gain familiarity with the features, you can refine specific settings to better suit your lifestyle.

# INNOVATION



In recent years camera technology has become a large part of home security, with doorbell and monitoring solutions that protect the outside perimeter of your home.

As for indoor security, camera technology is not well accepted, primarily due to privacy concerns. DIY technology hasn't evolved beyond making door, window sensors and motion sensing (in select areas) battery operated and wireless. Most solutions fall short of properly securing the inside of your home.

As a home owner what would you consider an ideal indoor security solution? A solution that can monitor every room of your home without invading your privacy? Such a solution is only possible if you have sensors in every room of the house. This can be achieved by installing sensor rich BriteLight switches in every room. Since there are no cameras or microphones, your privacy is maintained.

Moreover, BriteLight's Innovation goes beyond just providing basic DIY security. With software intelligence for detecting and correlating patterns, it provides a unique value — the ability to identify abnormal patterns and send alerts:

## DIY Security

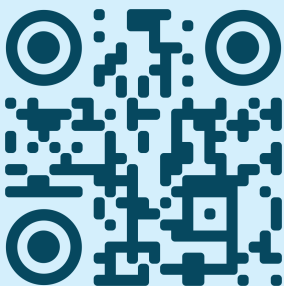
- Auto arm and disarm based on when house is usually unoccupied.
- Auto arm the rooms that are non-occupied at night and leave the occupied rooms disarmed. Disarm the armed rooms automatically when people move from a disarmed to an armed room at night.
- Built-in light strobing and intrusion deterrence.

## Aging in Place

- Tracking seniors without use of any wearables.
- Understand their routine behavior and alert if anything goes amiss, like with a fall and the person hasn't moved for a while.

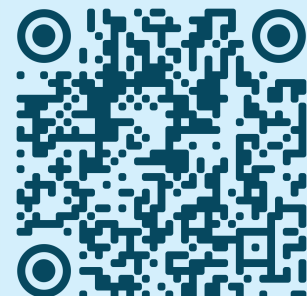
There is no hub, and no additional hardware or wiring ever required.

## Website



<https://britelight.store/consumers>

## Email



[sales@britelight.store](mailto:sales@britelight.store)